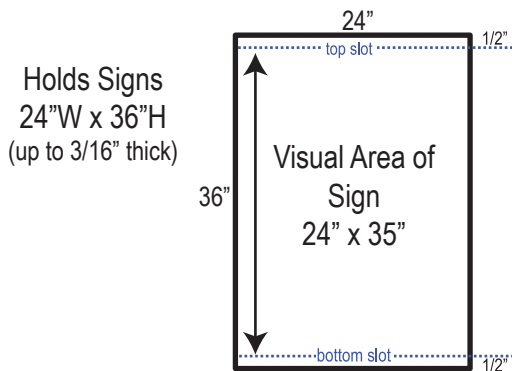
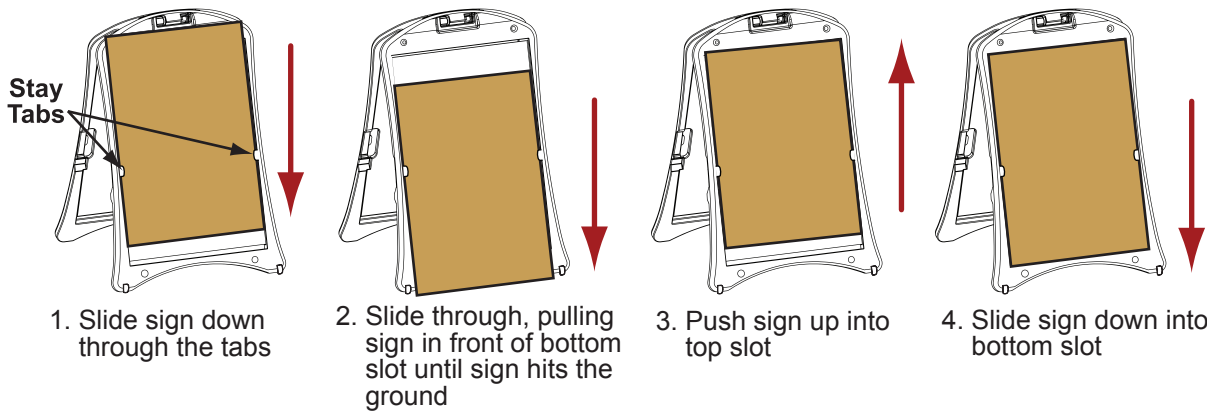


Signicade® NXT

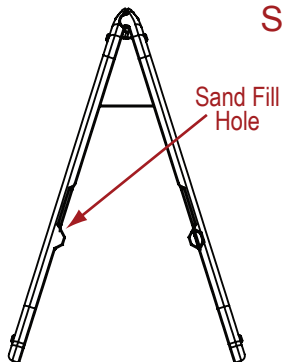
PLASTICADE®



Sign Insertion Instructions:



Sand Ballasting Instructions



Each sign frame has two fill holes, one on each side of the frame.

Remove plug from fill hole and fill each hole with sand. 5 lbs. of sand per hole for a total of 10 lbs. per sign frame is recommended.

Play sand is suggested for ease of filling.

Tether



- Holds frame open at 35° angle
- Galvanized, braided steel wire
- Tamper-free, attached with rivets
- Collapses when frame is closed