

Signicade® NXT

PLASTICADE®

The Next Generation of the Signicade®

- Holds two 24"W x 36"H signs
- Wheels make the sign frame easy to move
 - wheels engage when sign stand is tilted
- Rounded profile
 - pleasantly curved top and sides elevate your message
- Quick-Change™ feature
 - change signs in seconds, signs easily slide in and out
 - use rigid sign material 3/16" thick or less
- Concealed hinge doubles as a handle
- No Maintenance
 - all plastic, use indoors and out
- Built-in tether keeps sign faces at perfect angle
- Hidden sand fill ports on back side of sign panel
 - ballast with up to 10 lbs. of dry sand
- Stay Tabs™ ensure signs stay securely in place
- Stacking lugs keep stacked units from sliding



WHEELS ↑

Signicade[®] NXT

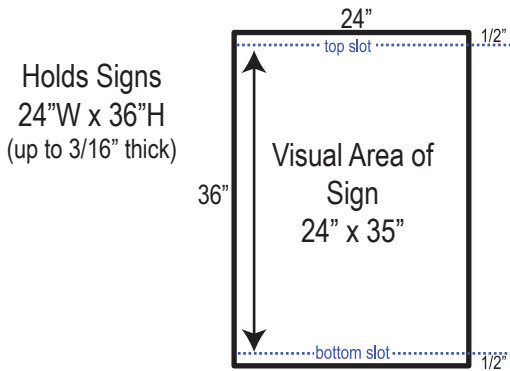
OUTSIDE DIMENSIONS : 45"H x 30.5"W x 3"D

DIMENSIONS OF RECESSED SIGN AREA: 35"H x 24.13"W

WEIGHT: 17 lbs.

COLORS: White and Black, Custom Colors Available

2 SIGNS PER FRAME

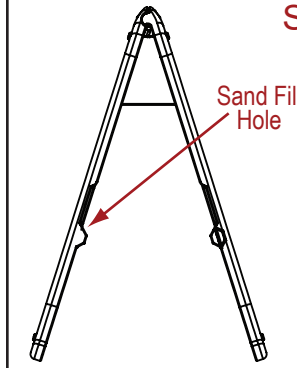


Tether



- Holds frame open at 35° angle
- Galvanized, braided steel wire
- Tamper-free, attached with rivets
- Collapses when frame is closed

Sand Ballasting Instructions

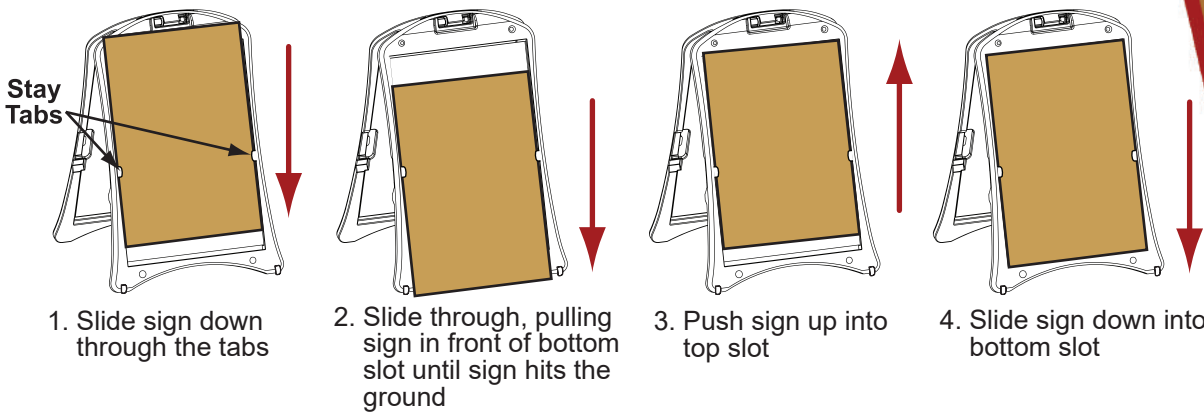


Each sign frame has two fill holes, one on each side of the frame.

Remove plug from fill hole and fill each hole with sand. 5 lbs. of sand per hole for a total of 10 lbs. per sign frame is recommended.

Play sand is suggested for ease of filling.

Sign Insertion Instructions:



MADE IN THE USA
US Patents Pending

PLASTICADE[®]

Slide in a Message Board...



or a Marker Board...



100 Howard Avenue
Des Plaines, IL 60018
phone (800) 772-0355
info@plasticade.com
Plasticade.com



HDPE